



COUNTRYSIDE

Places People Love

PATH FINDER



Bracknell
Forest
Council

June 2022





Agenda

- Sustainability strategy
 - Built to last
 - Sustainable communities
 - Thriving together
- What does net zero mean?
- What is a zero carbon ready home?
- How will we play our part in achieving net zero?



PATH FINDER

Direction

Delivery

Determination



COUNTRYSIDE
Places People Love

PLACES PEOPLE LOVE

To create places where people love to live, with sustainable communities built to last.

BUILT TO LAST

We will take pride in efficiently and responsibly building **45,000 new sustainable homes by 2025.**

SUSTAINABLE COMMUNITIES

We will work with our partners to deliver sustainable communities that will enhance the quality of life of **over a million people by 2030.**

THRIVING TOGETHER

By 2025, all our people will feel they are thriving in an inclusive and rewarding workplace, **committed to creating places people love.**



SMARTWASTE
delivered by bre

SUPPLY CHAIN SUSTAINABILITY
SCHOL



SUSTAINABLE DEVELOPMENT **GOALS**

BUSINESS AMBITION FOR **1.5°C**  



BUILT TO LAST

Science based targets

10% better safety performance

100% Sustainable timber

50% of home MMC

20,000 factory built homes

20% less waste

5 Star Builder

Water efficiency 105 LPPD





SUSTAINABLE COMMUNITIES

15,000 Affordable homes

30% Social value

250,000 Trees

10%+ Biodiversity Net Gain

10,000 home EV charging

Regional job creation plans

Supply chain sustainability school

3 post occupancy studies a year



THRIVING TOGETHER

5% of workforce are trainees

3 days training per person per year

1 Mental Health First Aider on every site

1-day sustainability training per person year

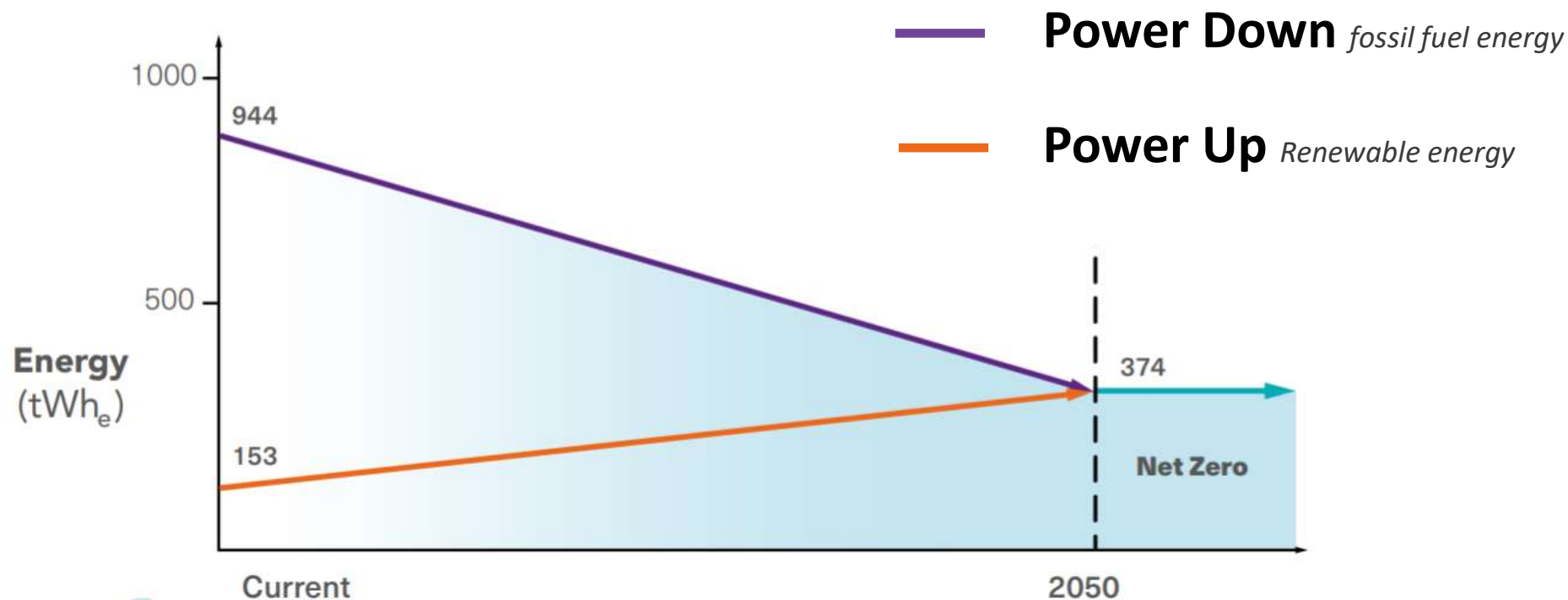
Diversity, equity and inclusion targets

Achieve the Living Wage Foundation



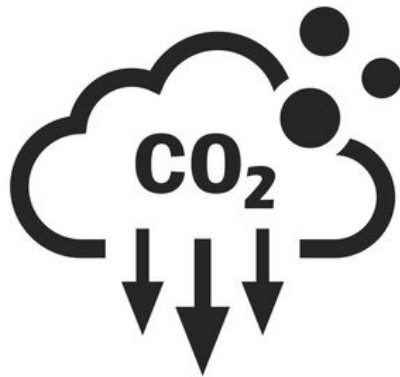


Explaining net zero – Decarbonising the UK



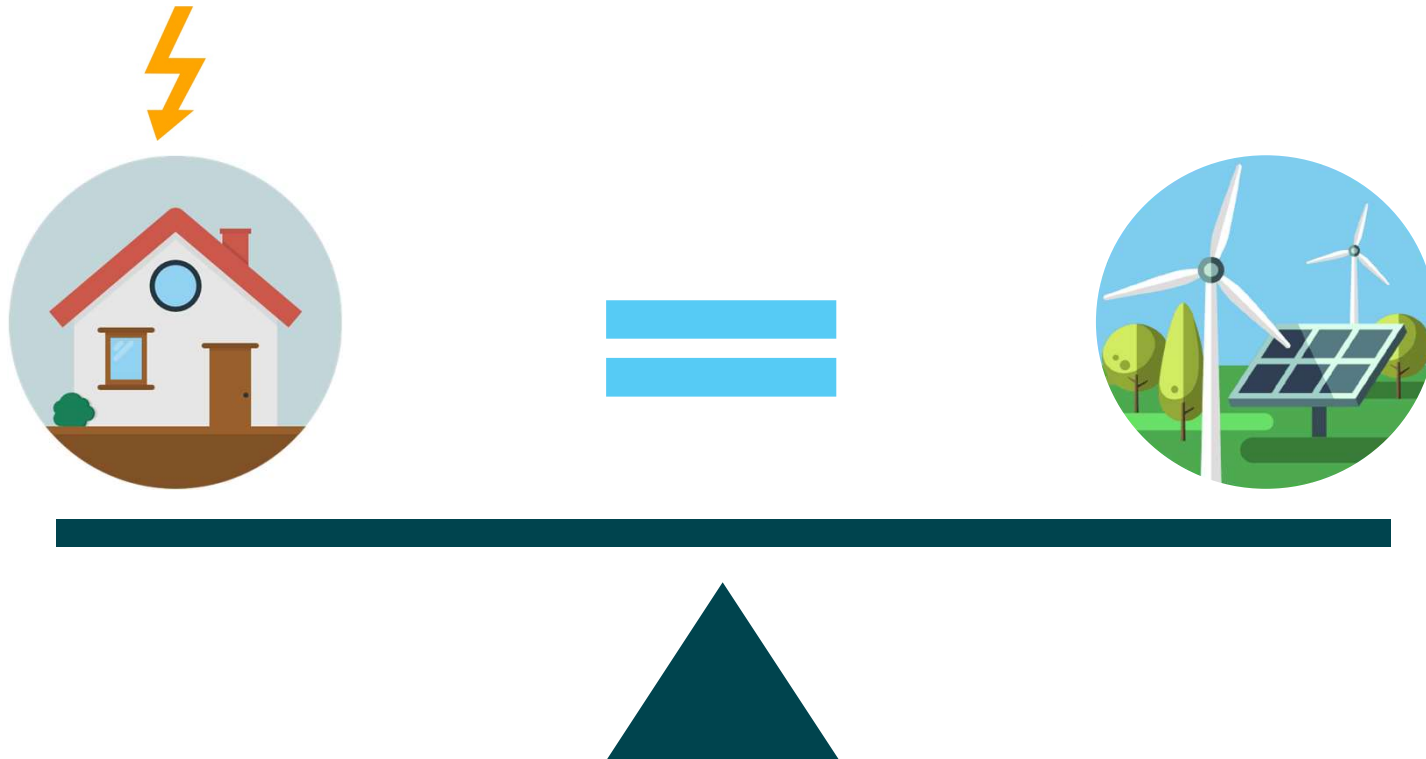


Explaining net zero – achieving a balance



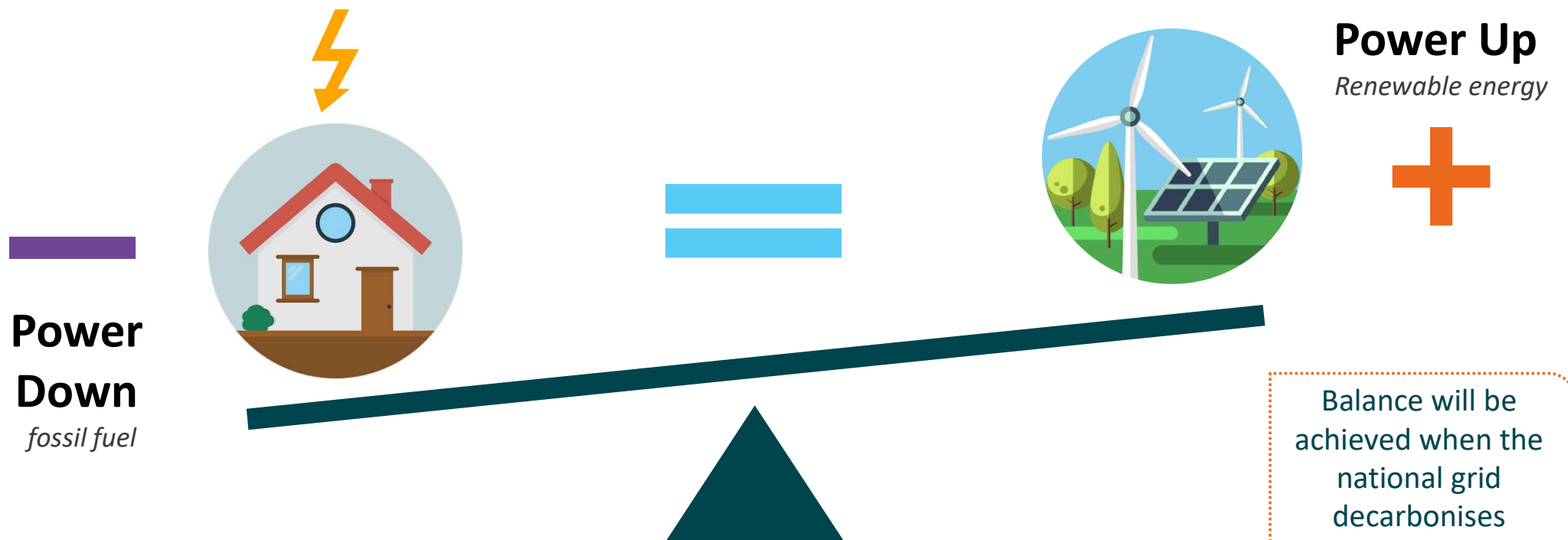


A net zero carbon home – achieving a balance





A zero carbon ready home





Becoming net zero – a framework for change

Direction

**A clear vision,
credible targets and
a strong business
imperative**

Delivery

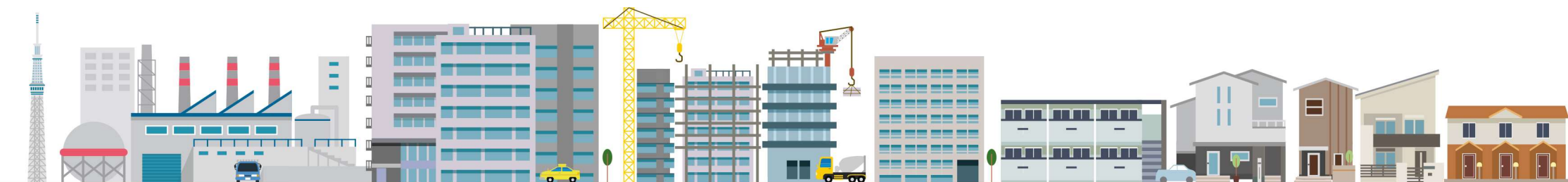
**A pathway of
measures that will
reduce emissions
across the value chain**

Determination

**Clear accountability,
responsibility and
determination to
achieve net zero**



Carbon footprint of our value chain



Suppliers to Countryside

Countryside operations

Customers and end of life

Raw material extraction	Material production	Delivery	Manufacturing	Construction	Homeowners and tenants	End of life
Sourcing, extracting and processing construction materials		Storing and delivering materials	Manufacturing timber frame houses and constructing residential developments		Living in the homes (60 years)	End of life demolition
% of total emissions (99.6% of total)		18%	5%	2%	72%	2%



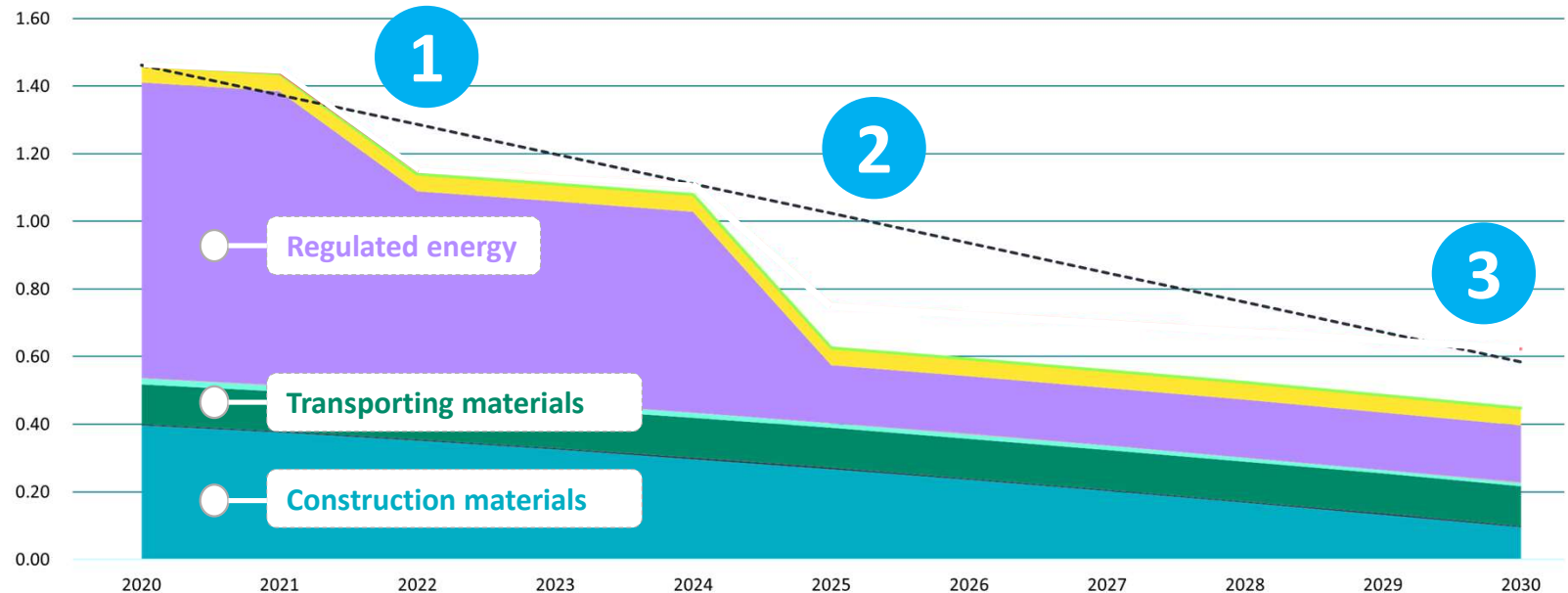
Net zero reduction trajectory

--- SBT - 52% per scope 3 reduction
— Internal targets and programmes

1 Part L Uplift

2 Future Homes
Standard

3 MMC

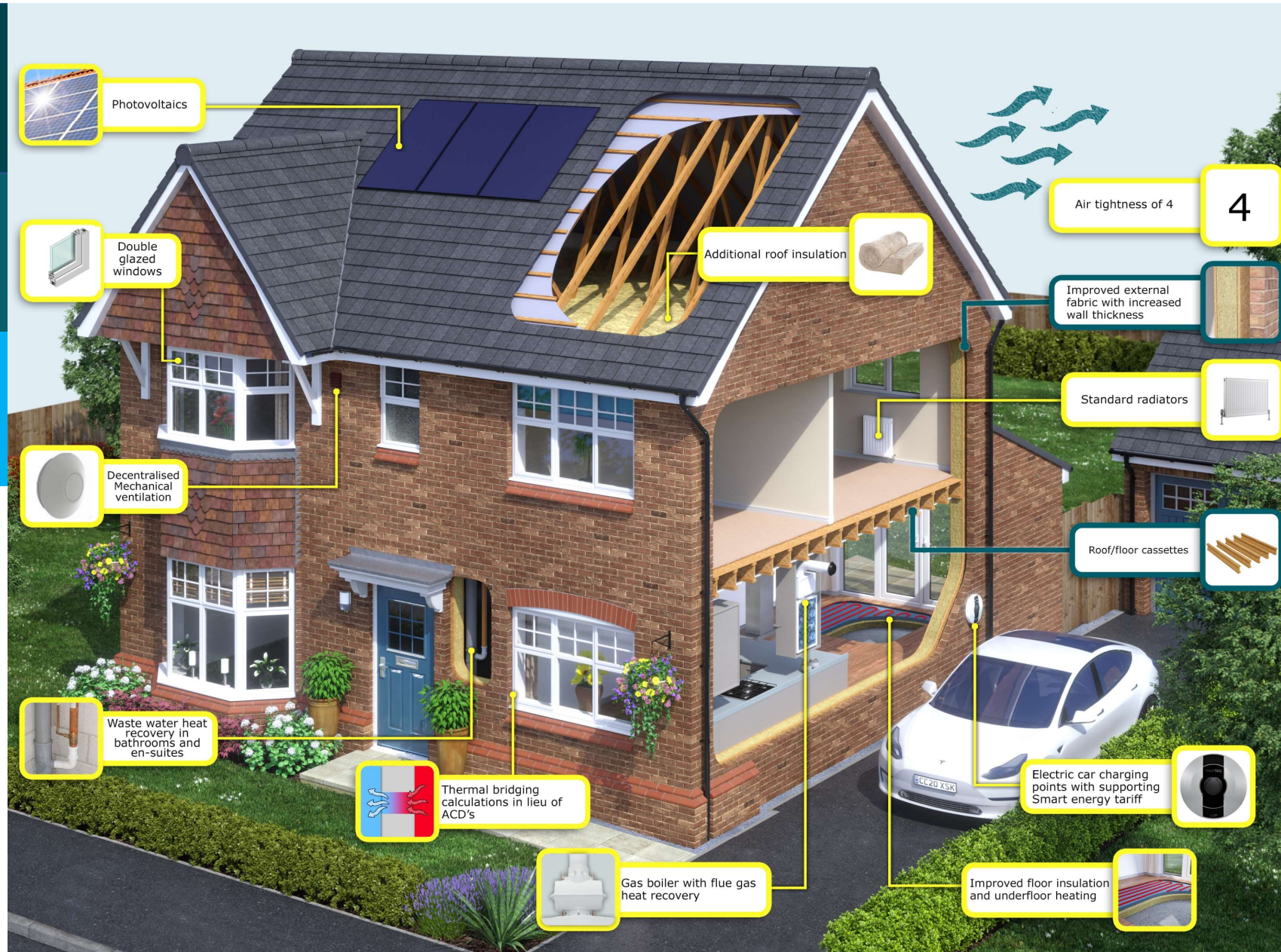


SCIENCE
BASED
TARGETS

PATH FINDER

Future Homes Standard 2022

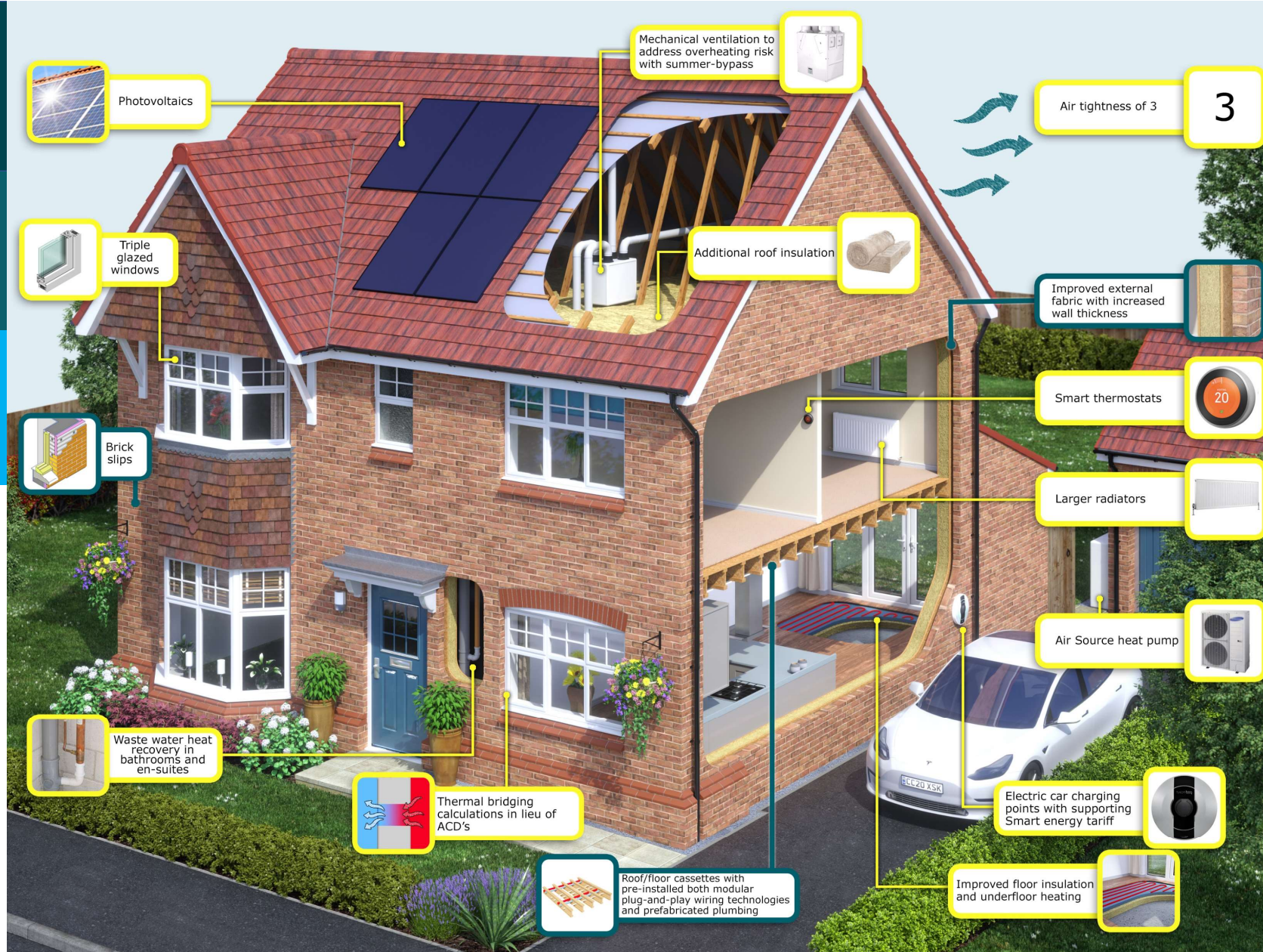
c30% less CO₂
emissions



PATH FINDER

Future Homes Standard 2025

c80% less CO₂
emissions





Homes fit for a net zero future – key challenges





A fair and just transition to net zero



Tenants and
home owners

Minimising lifecycle
and heating costs



Local
Communities

Supporting low-
carbon initiatives



Local
economies

Supporting local
economies



Our
People

Sharing knowledge
and expertise



Industry

Investing in training
and skills





Leadership and accountability - sustaining progress

